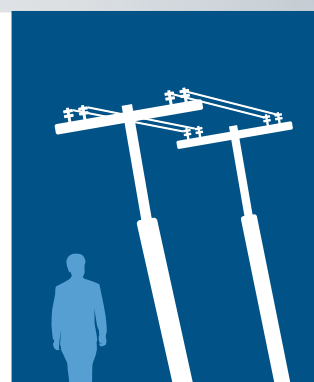


TOP 6 Reasons to Tackle Your Double Poles *Now*

01

THEY ARE UNSAFE

The presence of double utility poles on streets can be a **liability to pole owners** for several reasons. Accidents occurring with vehicles are double trouble, while leaning poles pose a great risk to people walking or biking underneath. The old pole was replaced for a reason and *it needs to go*.



02

MAY RESULT IN FINES

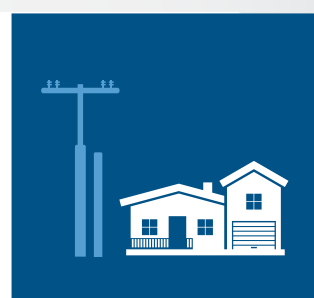
States, PUCs and pole owners all participate in charging fines for lack of timely pole transfers because of safety issues, but also **delays for other companies to attach**. This situation slows down delivery of valuable services that are important to the public, like broadband. Hazardous poles can incur NESC violation fines, while overdue pole transfers can also turn into violations you may pay for. Not only in dollars but also in access to a given owner's field assets.



03

THEY ARE UNSIGHTLY

Double poles are simply unattractive and **these eyesores can create issues** with individual homeowners and entire municipalities alike, who complain about seeing these double assets on their property.



04

POOR RELATIONS WITH JOINT USE PARTNERS

Not transferring off poles when requested by the pole owner creates a poor atmosphere between utilities, communications and broadband providers — *basically everyone attached to the pole*. Untimely transfers also slow down efforts to push revenue-generating services potential customers want and need now. Up-to-date asset records coupled with good communication between companies not only fosters positive relationships, but allows you to create a process where **everyone knows exactly what to do and when so service keeps flowing**.



05

RESOURCE CONTENTION CAN BE SOLVED WITH MANAGED SERVICES

Not having the time or resources to handle an **influx of pole transfer requests** is common today. This work falls outside typical business as usual and requests easily pile up. No one likes getting behind and many companies are choosing to work with managed services providers that are experts in joint use. If you don't have the in-house staff to clear the backlog hurdle, *there is help out there*.



06

POLE TRANSFER FIELD VISITS REVEAL UNPERMITTED ATTACHERS

Illegal attachments are often discovered during the course of performing equipment transfers. Where there are lots of poles, these can add up to lots of lost revenue for asset owners, who are also liable for every pole, no matter how many attachers are unpermitted. **It's not only good for the safety and health of your plant to eliminate double poles — it can also be beneficial to your bottom line.**



Need assistance with overdue pole transfers?

Without the resources to process and track each pole transfer request, they easily pile up. Alden can help.

Visit www.aldensys.com/utility-pole-transfers for more information.